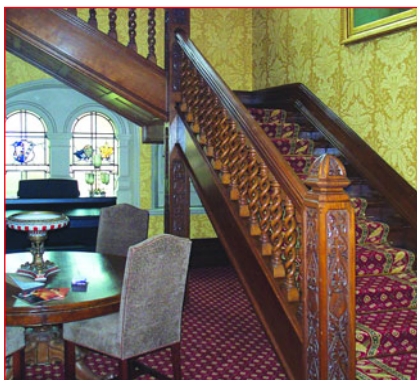


ENVIROGRAF® PRODUCT 42

INTUMESCENT PAINT AND VARNISHES FOR WOOD ETC

THE ONLY COATING SYSTEM FOR INTERNAL AND EXTERNAL UNTREATED WOOD OFFERING UP TO 66 MINUTES PROTECTION



DESCRIPTION

Envirograf® Product 42 is a range of clear and white intumescent coatings, giving protection to a range of wood and wood-derived materials. A UV protection product is available.

USE

These coatings can be used on insulation board, MDF board, plasterboard, wood, and some wood-derived products. There is no need to strip off the existing paint or varnish, as Envirograf® adhesion primer can be used. See data sheet for full details.

PERFORMANCE

All types of new and old doors (some over 200 years old) have been tested in accordance with BS476 Part 22 (1987), and their fire resistance was upgraded to an integrity of over 50 minutes. The HW range can also upgrade wood panelling to 30 minutes or 60 minutes fire rating, according to the type of wood and its thickness. Open joists and floorboards have achieved 60 minutes of fire protection on a loaded floor to BS476 Part 20 (1987). Timber mouldings and carcasses have achieved 90 minutes of fire rating to BS476 Part 20 (1987). A range of timber types, including MDF, plywood, etc, have been tested and complied with BS476 Parts 6 and 7 (1987) Classes 0 and 1. Also tested to EN1364-1 (1999). This coating system now complies with the Classification A1-B/S1/d0 of European Standard EN13501 Parts EN13823 (2002) single burn test (SBI) and EN11925-2 (2002) ignitability

ORDERING REFERENCES :



Please refer to our Data Sheet before specifying coatings.

HWAP	Clear adhesion primer supplied in 1 litre, 2½ litres, or 5 litres (for use over existing paint or varnish at 10m² per litre per coat)
HW01E	White coating supplied in 1 litre, 2½ litres, or 5 litres (can be applied to new timber or over HW primer)
HW02E	Clear coating supplied in 1 litre, 2½ litres, or 5 litres (can be applied to new timber or over HW Primer)
HW03UV	Clear protective coating supplied in 1 litre, 2½ litres, or 5 litres (for use over HW02E in exposed areas)
HW04UC*	White protective coating supplied in 1 litre, 2½ litres, or 5 litres (for use over HW01E as an undercoat)
HW04TC*	Top coat in white or coloured finishes
HW05TC	Clear protective coating supplied in 1 litre, 2½ litres, and 5 litres (for use over HW02E as a hard-wearing internal surface (matt/satin/gloss finish)
AEC	Acrylic Emulsion Coating (semi-gloss only, use over HW01)
HW/BL	Clear water-based top coat for internal use
HW/WTC	Clear water-based top coat for external use

***Water-based and standard versions available – please specify requirements**